



MONTHLY MEMBERSHIP PROGRESS REPORT

District A 5

Results as of: 06/30/2019

GMT: CHRIS LEWIS

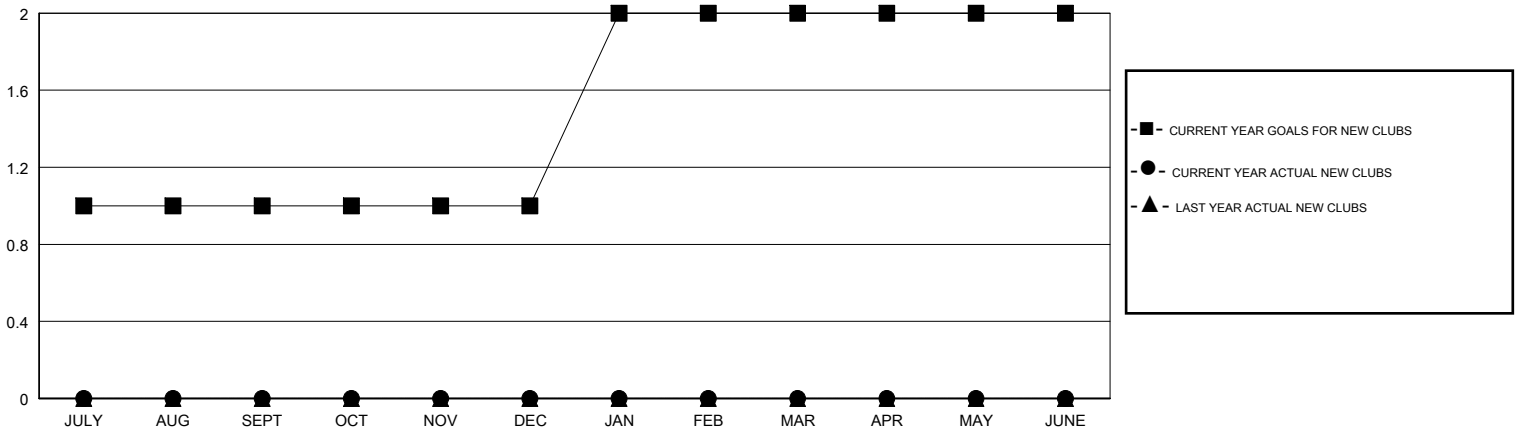
LOCATION ONTARIO

GMT CA

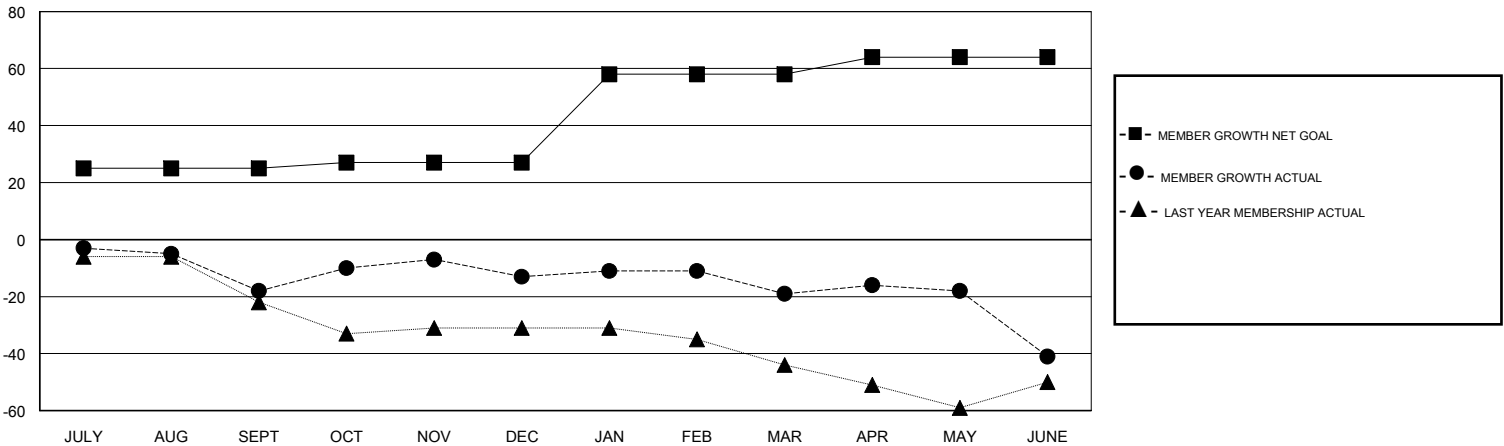
Clubs			
RESULTS FOR 2018-2019			
QUARTER	NEW CLUB GOAL	NEW CLUBS	DROPPED CLUBS
JULY/AUG/SEPT	1	0	0
OCT/NOV/DEC	0	0	0
JAN/FEB/MAR	1	0	0
APR/MAY/JUNE	0	0	1

Members			
RESULTS FOR 2018-2019			
QUARTER	MEMBER GROWTH NET GOAL	MEMBER GROWTH ACTUAL	DROPPED MEMBERS ACTUAL (including transfers)
JULY/AUG/SEPT	25	19	33
OCT/NOV/DEC	2	60	46
JAN/FEB/MAR	31	23	25
APR/MAY/JUNE	6	26	45

GOALS AND ACTUAL NEW CLUBS CUMULATIVE



GOALS AND ACTUAL MEMBERS CUMULATIVE



DROPPED CLUBS: 1	35 CLUBS OF 53 ADDED 1 OR MORE NEW MEMBERS	<u>GENDER DISTRIBUTION</u>	
DROPPED MEMBERS		MALE	689 (57.56%)
DECEASED	19	FEMALE	508 (42.44%)
CLUB CANCELLED	16	Women Percentage Fiscal Year Goal: 48%	
OTHER	114	TOTAL FAMILY UNIT MEMBERS	219
TOTAL	149	FAMILY MEMBERS PAYING HALF DUES	111

[CLICK HERE FOR CUMULATIVE MEMBERSHIP DATA](#)